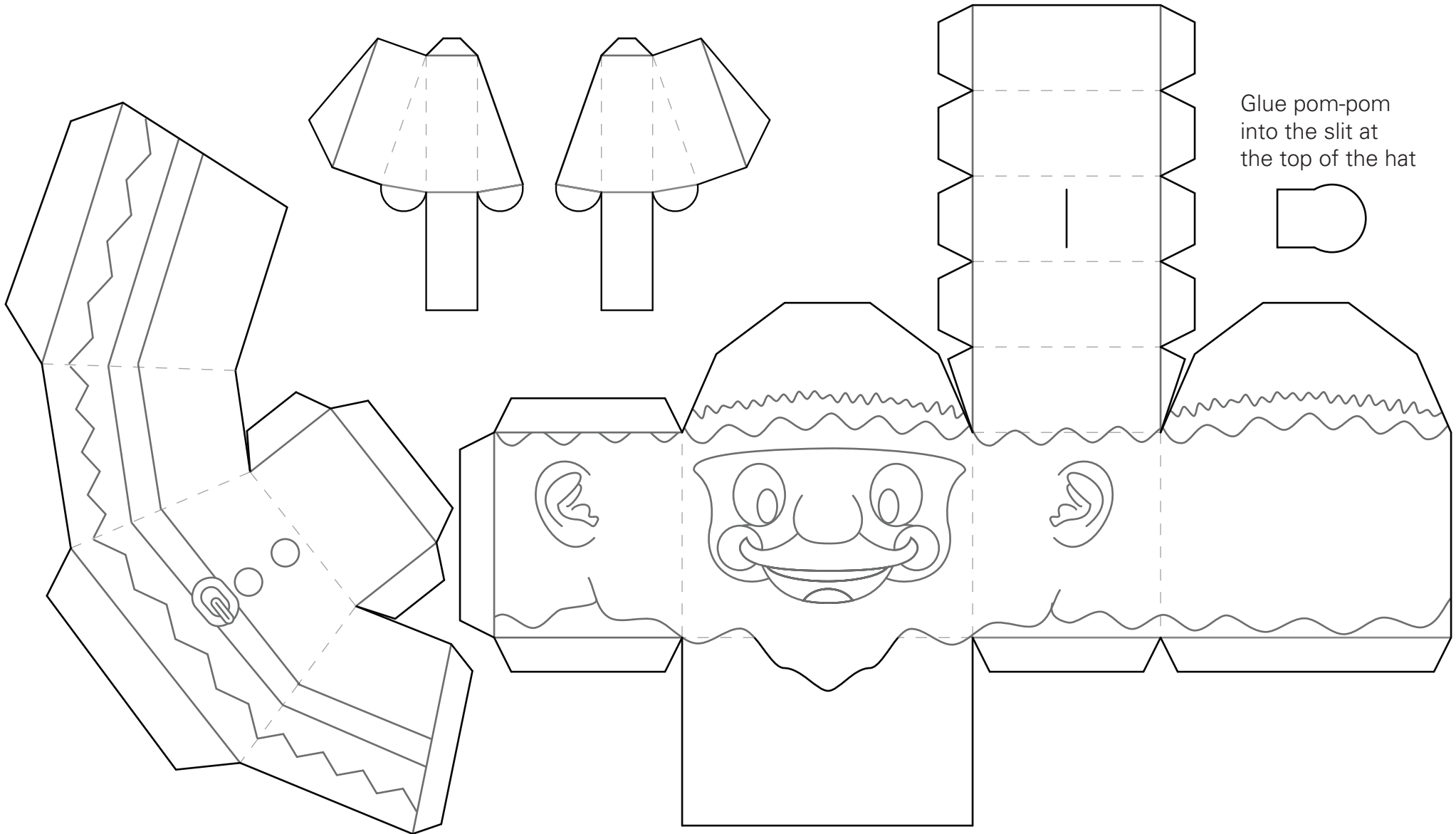
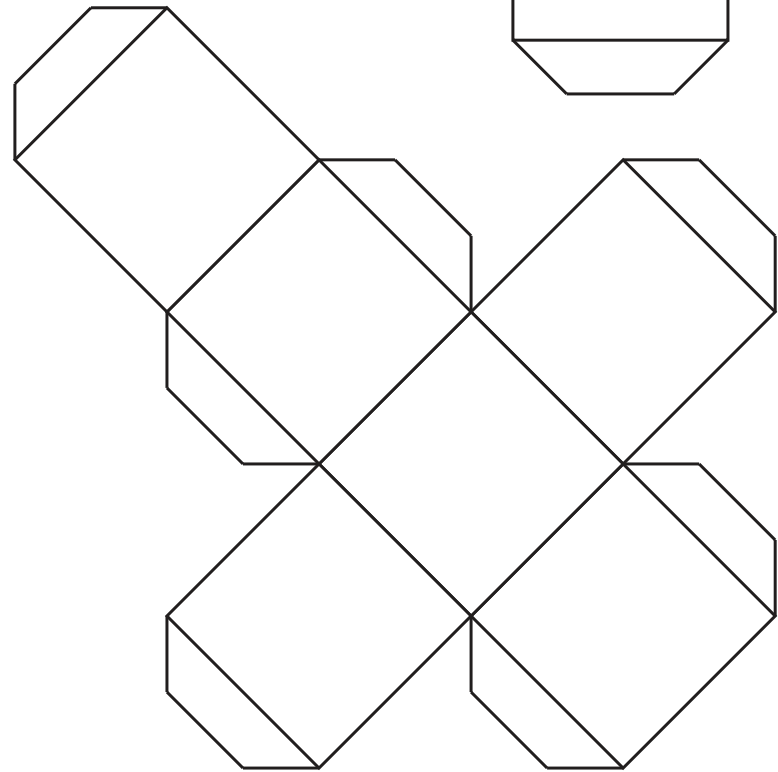
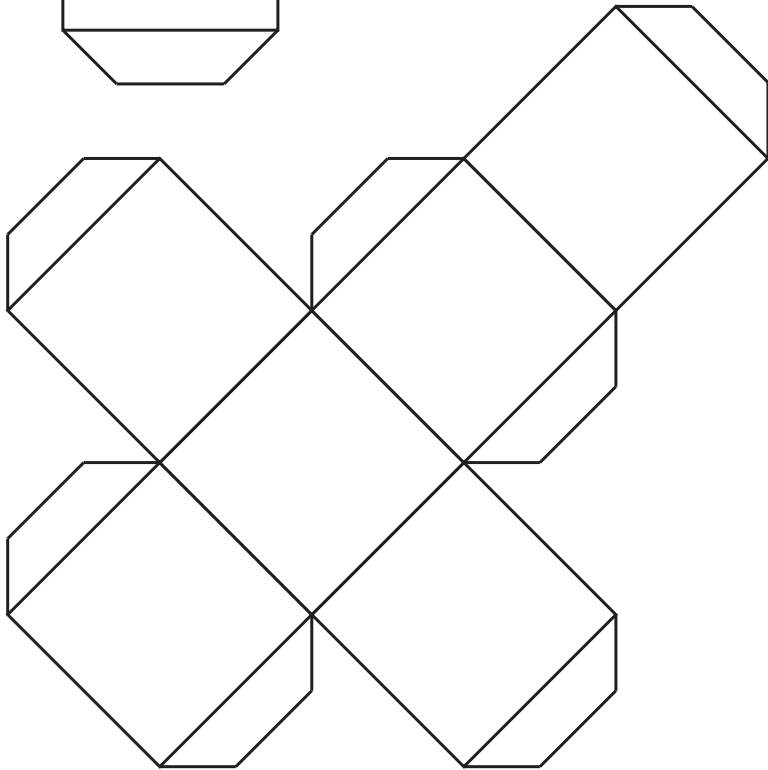
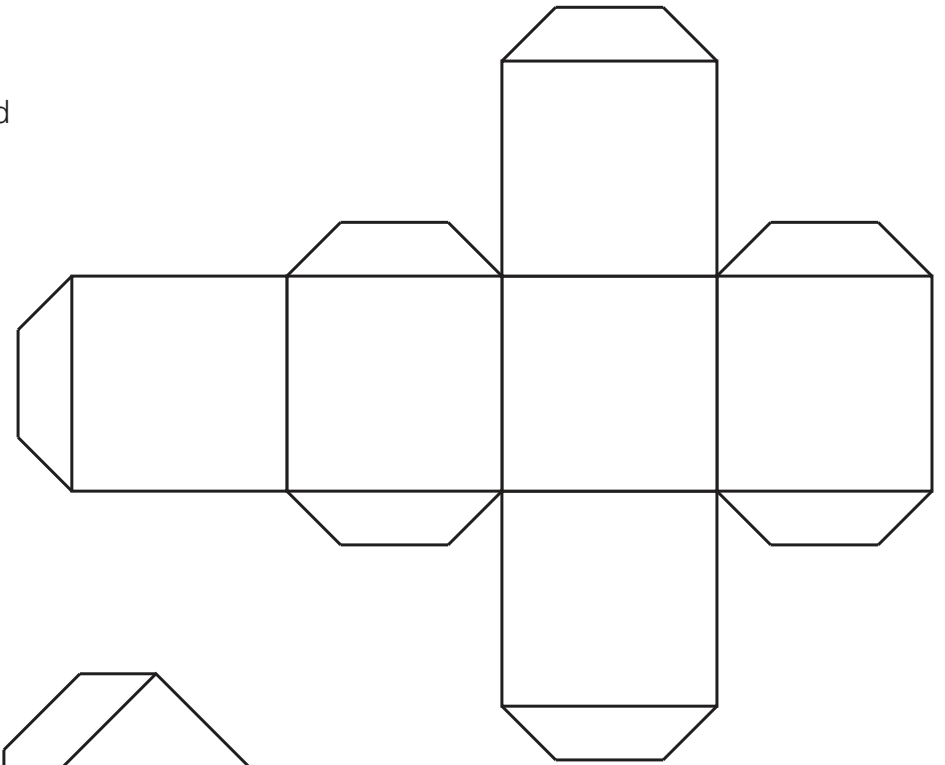
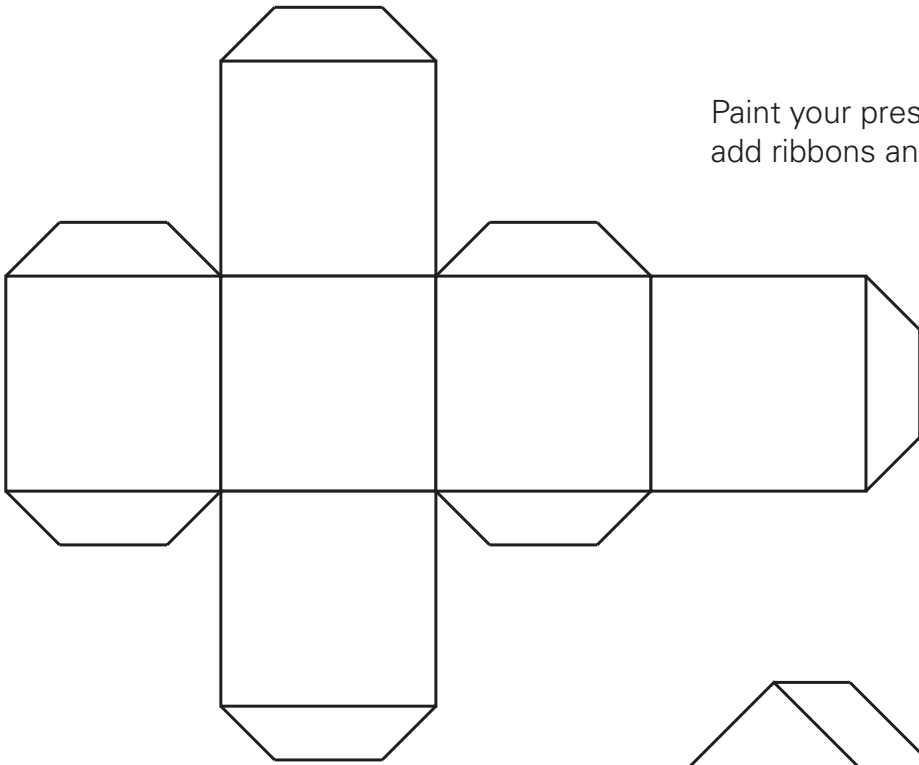


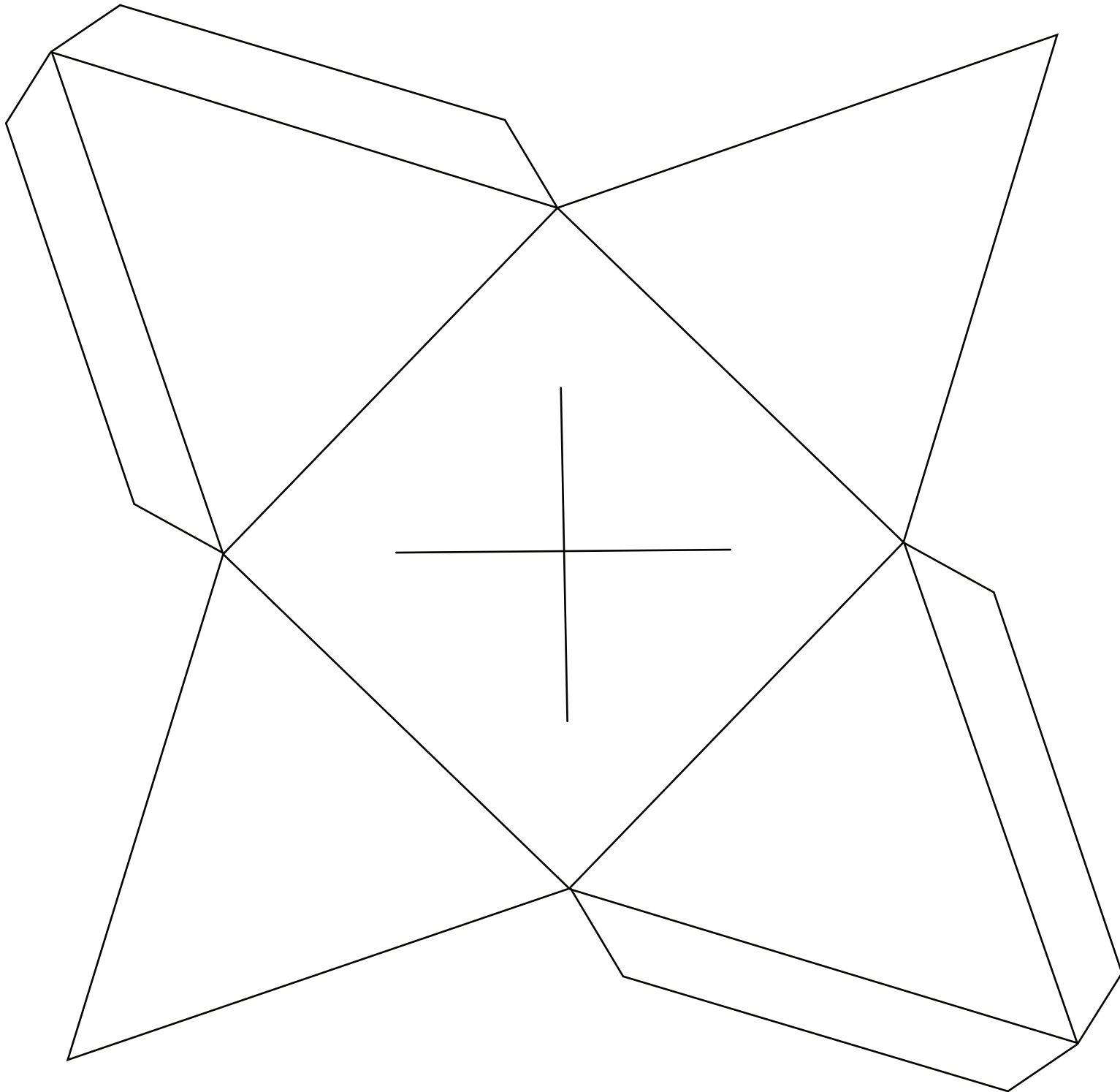
Santa Scene

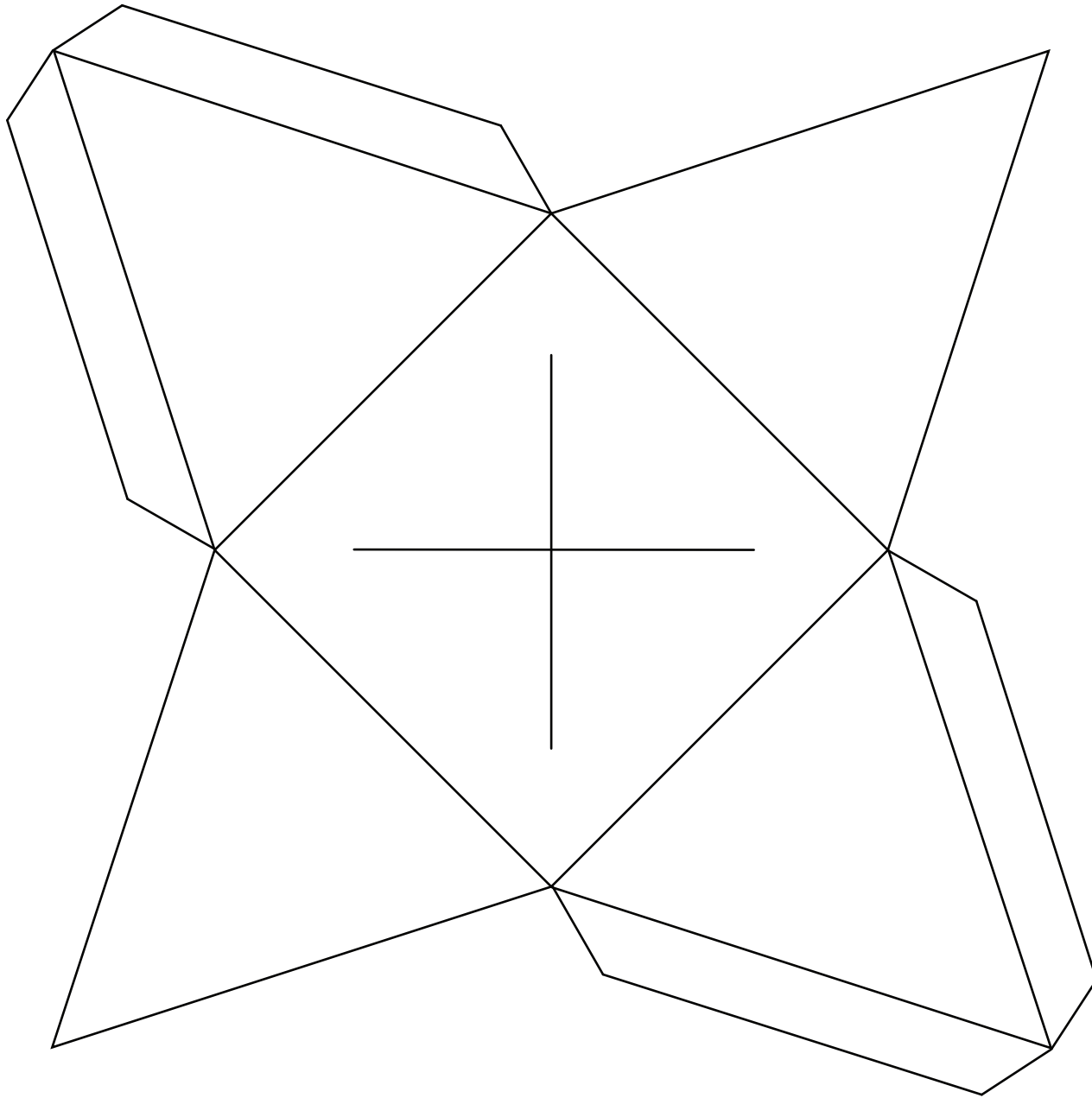
Cut out around the dark lines.
Cut slit in top of hat for pom-pom.
Fold the dotted lines.
Glue everything together.



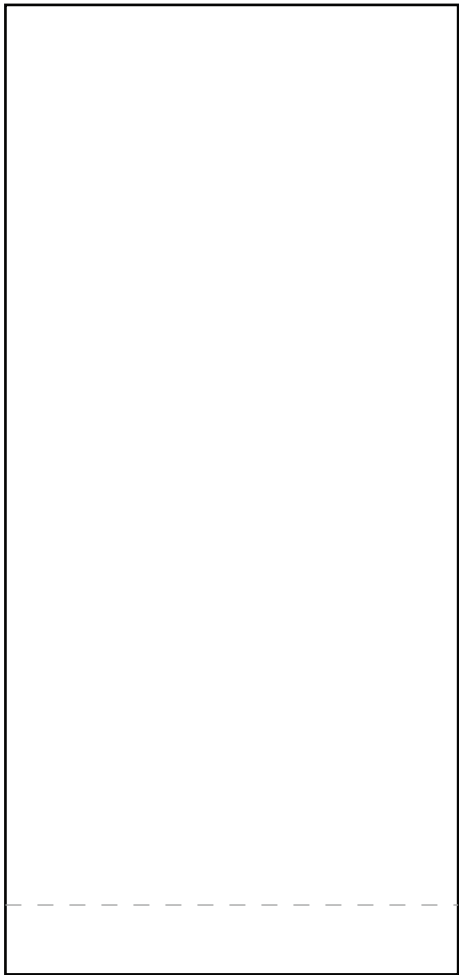
Paint your presents and
add ribbons and bows.



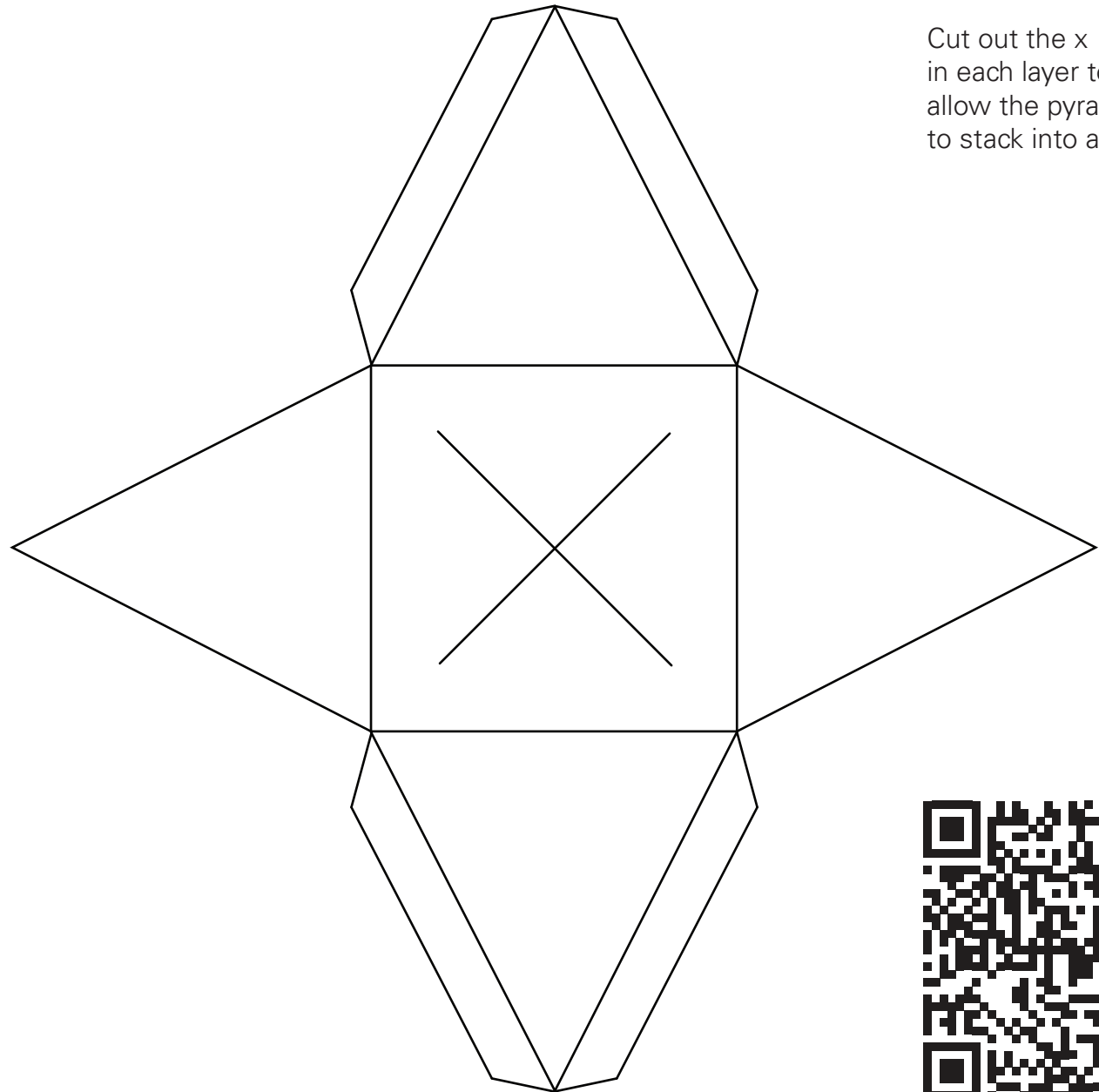




Fold the tabs down and glue. It is helpful to stick your fingers inside the "X" cut-out.



Roll the rectangle into a cylinder and glue to form the tree trunk. Make adjustments to diameter as necessary.



Cut out the x in each layer to allow the pyramids to stack into a tree.



Free to use source document
CC BY-SA 4.0 Jeff Milner